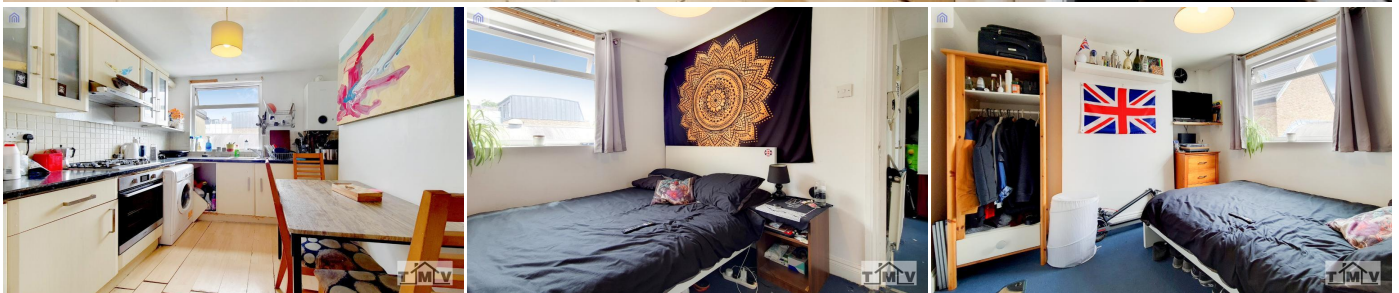




2 Bedroom Flat for Sale

Flat 2, 32 Morval Road, London, SW2 1DQ



Key Features

- First Floor Flat
 - Local Shops Nearby
 - Brixton Station
 - Local Pub
 - Bars & Restaurants Nearby
- ENQUIRE ENQUIRE ENQUIRE!

£450,000

Description

***** GUIDE PRICE £450,000 - £500,000*****

TMV Estate Agents are pleased to present this wonderful two bedroom first floor flat on Morval Road.

The property presents itself with two large bedrooms on a quiet one way street road.

Our helpful sales team would be delighted to assist you in arranging a viewing and providing any further information that is available. We also have two additional two bedroom flats in this building set over the three floors , so do keep an eye out!





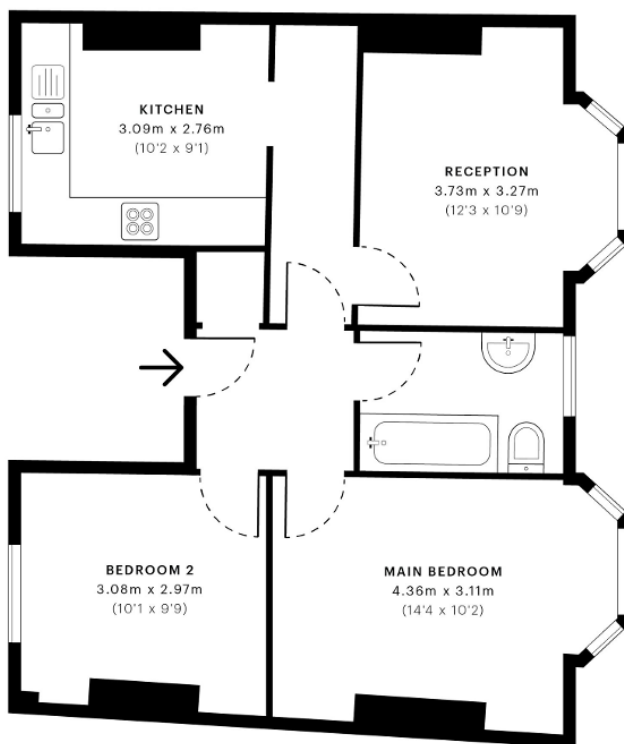


Morval Road, SW2

CAPTURE DATE 02/07/2022 LASER SCAN POINTS 46,852,706

GROSS INTERNAL AREA

55.16 sqm / 593.74 sqft



— First Floor

GROSS INTERNAL AREA (GIA)
The footprint of the property
55.16 sqm / 593.74 sqft

NET INTERNAL AREA (NIA)
Excludes walls and external features
Includes walkways, restricted head height
50.92 sqm / 548.10 sqft

EXTERNAL STRUCTURAL FEATURES
Balconies, terraces, verandas etc.
0.00 sqm / 0.00 sqft

RESTRICTED HEAD HEIGHT
Limited use area under 1.5 m
0.00 sqm / 0.00 sqft



Spec Verified floor plans are produced in accordance with Royal Institution of Chartered Surveyors' Property Measurement Standards. Plots and gardens are illustrative only and excluded from all area calculations. Due to rounding, numbers may not add up precisely. All measurements shown for the individual room lengths and widths are the maximum points of measurements captured in the scan.

IPMS 3B RESIDENTIAL 54.33 sqm / 584.80 sqft
IPMS 3C RESIDENTIAL 51.95 sqm / 559.19 sqft

SPEC ID: 62bc5d30ca15ad0ddb031537

Disclaimer: These particulars are thought to be materially correct though their accuracy is not guaranteed and they do not form part of any contract. All measurements are approximate and we have not tested any fitted appliances, electrical or plumbing installation or central heating systems.