



2 Bedroom Apartment for Rent

Water Gardens, Canada water, london, SE16 6RG



Key Features

- Luxurious two bed apartment
- Car parking space available
- 24hr concierge
- Excellent Transport Links
- Master Room with En-Suite
- Excellent sized second bedroom
- Open Plan
- Siemens Appliances

£455 per week

Description

TMV are proud to present this fabulous contemporary luxury flat on the 2nd floor of the desired Water Gardens development. This amazing two bedroom property benefits from a modern interior with a smart neutral finish.

The property comprises open-plan reception room and kitchen with a range of integrated appliances, master bedroom with en-suite, second bedroom and bathroom. Additional benefits include wooden flooring, plenty of storage space and large windows allowing plenty of natural light.

Water Garden Square offers opportunities to enjoy the local Surrey Quays and Southwark Park and is only 3 minutes away from the Canada Water station. There is only a short walk to a popular Surrey Quays Shopping Centre including 24hr Tesco Supermarket.

Local transport links include Canada Water Station (Jubilee Line) and an array of A roads including the Rotherhithe Tunnel for swift access into and out of the City.





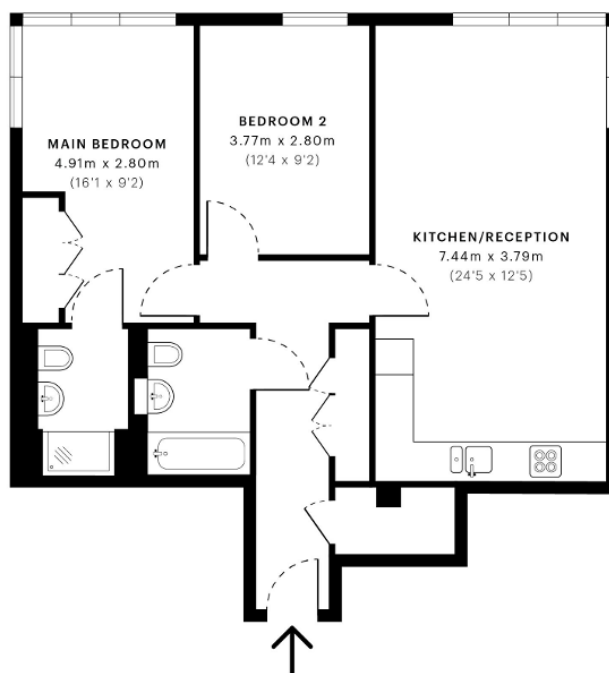


Dovecote House, SE16

CAPTURE DATE 26/06/2021 LASER SCAN POINTS 2,017,107

GROSS INTERNAL AREA

74.98 sqm / 807.08 sqft



— Second Floor

GROSS INTERNAL AREA (GIA)
The footprint of the property
74.98 sqm / 807.08 sqft

NET INTERNAL AREA (NIA)
Excludes walls and external features
Includes vestibules, restricted head height
72.02 sqm / 775.22 sqft

EXTERNAL STRUCTURAL FEATURES
Balconies, terraces, verandas etc.
0.00 sqm / 0.00 sqft

RESTRICTED HEAD HEIGHT
Limited use area under 1.5 m
0.12 sqm / 1.29 sqft



Spec Verified floor plans are produced in accordance with Royal Institution of Chartered Surveyors' Property Measurement Standards. Plots and gardens are illustrative only and excluded from all area calculations. Due to rounding, numbers may not add up precisely. All measurements shown for the individual room lengths and widths are the maximum points of measurements captured in the scan.

IPMS 3B RESIDENTIAL 76.76 sqm / 826.24 sqft
IPMS 3C RESIDENTIAL 74.51 sqm / 802.02 sqft

SPEC ID: 60d3498db7aee30e3f34abcb

Disclaimer: These particulars are thought to be materially correct though their accuracy is not guaranteed and they do not form part of any contract. All measurements are approximate and we have not tested any fitted appliances, electrical or plumbing installation or central heating systems.