



4 Bedroom Terraced for Rent

Bray Crescent, London, SE16 6AN



Key Features

- Four Bedrooms • Terraced House • 2 Bathrooms • Large Kitchen • Rear Garden • Garage • Close to Canada Water Station • Fantastic Views of the Lake

£775 per week

Description

TMV Estate Agents are pleased to present this fantastic four bedroom property for let. The property is a lovely terraced house and comes with ample storage and a garage.

The property is lightly furnished and is available from the end of August.





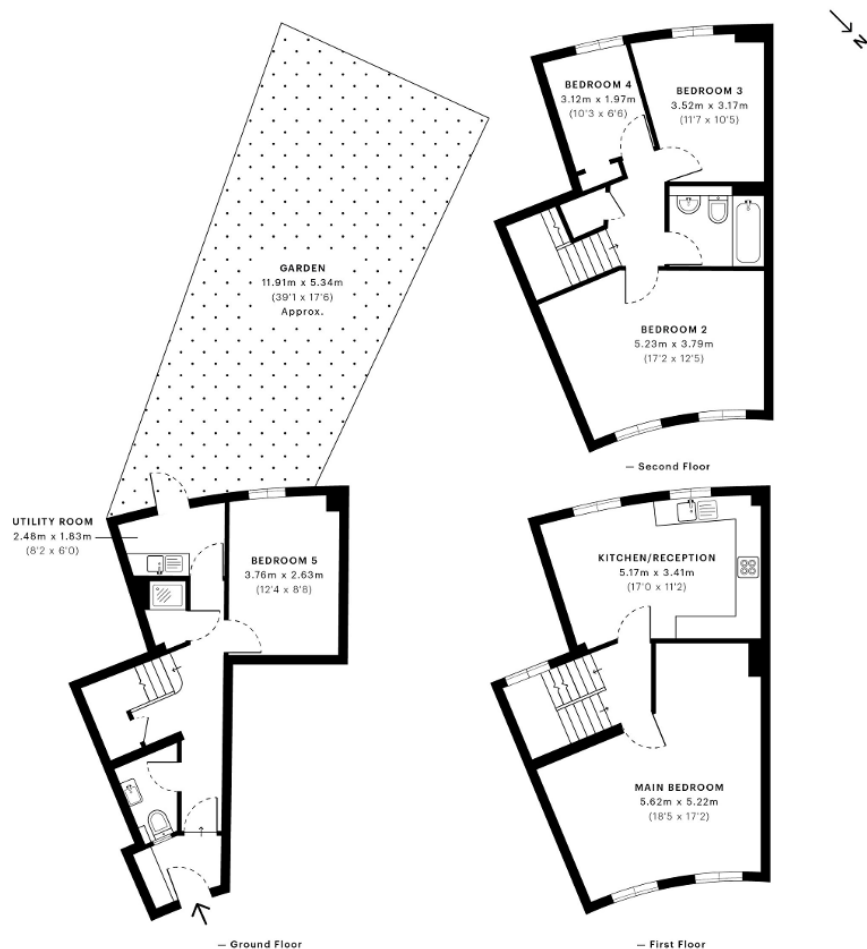


Bray Crescent, SE16

CAPTURE DATE 27/10/2020 LASER SCAN POINTS 39,906,836

GROSS INTERNAL AREA

117.76 sqm / 1267.56 sqft



GROSS INTERNAL AREA (GIA)
The footprint of the property
117.76 sqm / 1267.56 sqft

NET INTERNAL AREA (NIA)
Excludes walls and external features
Includes walkways, restricted head height
106.03 sqm / 1141.30 sqft

EXTERNAL STRUCTURAL FEATURES
Balconies, terraces, verandas etc.
0.00 sqm / 0.00 sqft

RESTRICTED HEAD HEIGHT
Limited use area under 1.5 m
0.00 sqm / 0.00 sqft



Spec Verified floor plans are produced in accordance with Royal Institution of Chartered Surveyors' Property Measurement Standards. Plots and gardens are illustrative only and excluded from all area calculations. Due to rounding, numbers may not add up precisely. All measurements shown for the individual room lengths and widths are the maximum points of measurements captured in the scan.

IPMS 3B RESIDENTIAL 112.64 sqm / 1214.60 sqft
IPMS 3C RESIDENTIAL 108.11 sqm / 1163.69 sqft

SPEC ID: 5f9b140484d8a57e7104097d

Disclaimer: These particulars are thought to be materially correct though their accuracy is not guaranteed and they do not form part of any contract. All measurements are approximate and we have not tested any fitted appliances, electrical or plumbing installation or central heating systems.