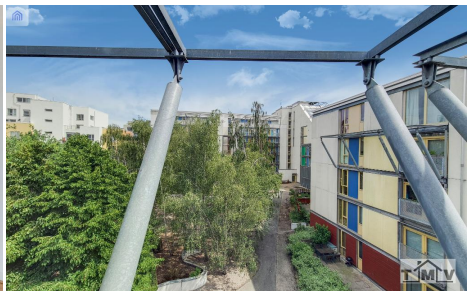




## 2 Bedroom Apartment for Rent

School Square, Greenwich, London, SE10 0QY



### Key Features

- 2 Bedroom • 2 Bathroom • Master Room with En-Suite • Private Balcony • Open Plan • Excellent Transport Links • Virtual Tour Available • Parking Available

**£392** per week



## Description

Modern and spacious 2 bedroom, 2 bathroom apartment located on the popular Millennium Village Development in Greenwich. This apartment benefits from an open plan kitchen with integrated appliances, master bedroom with en-suite shower, double bedroom and a family bathroom. Additional benefits include plenty of storage space and a private balcony.

Call now for more information.







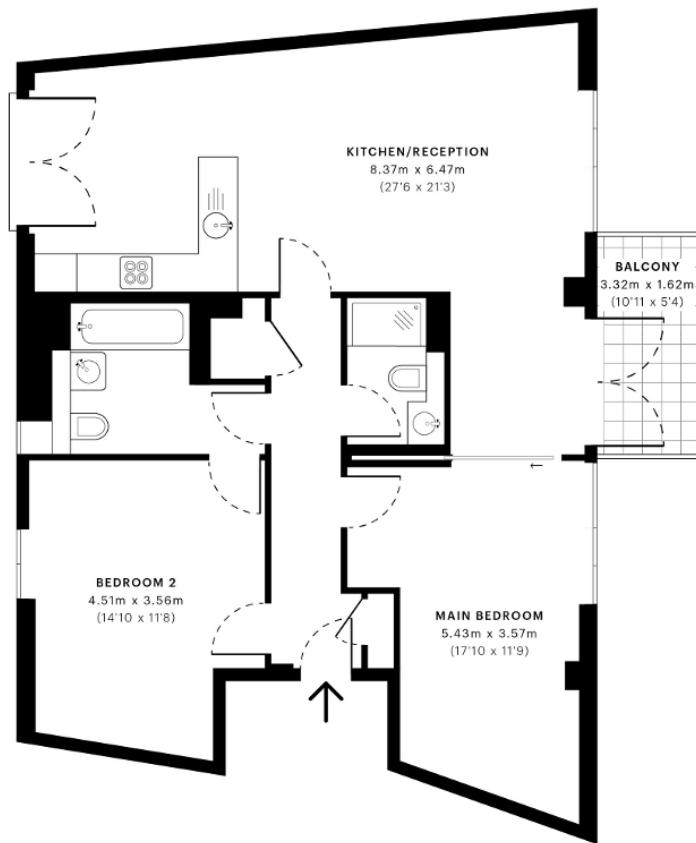


**Becquerel Court, SE10**

CAPTURE DATE 01/07/2021 LASER SCAN POINTS 2,524,248

GROSS INTERNAL AREA

85.42 sqm / 919.45 sqft



— Fourth Floor

**GROSS INTERNAL AREA (GIA)**  
The footprint of the property  
85.42 sqm / 919.45 sqft

**NET INTERNAL AREA (NIA)**  
Excludes walls and external features  
Includes vestibules, restricted head height  
80.95 sqm / 871.34 sqft

**EXTERNAL STRUCTURAL FEATURES**  
Balconies, terraces, verandas etc.  
5.34 sqm / 57.48 sqft

**RESTRICTED HEAD HEIGHT**  
Limited use area under 1.5 m  
0.00 sqm / 0.00 sqft



Spec Verified floor plans are produced in accordance with Royal Institution of Chartered Surveyors' Property Measurement Standards. Plots and gardens are illustrative only and excluded from all area calculations. Due to rounding, numbers may not add up precisely. All measurements shown for the individual room lengths and widths are the maximum points of measurements captured in the scan.

IPMS 3B RESIDENTIAL 91.40 sqm / 983.82 sqft  
IPMS 3C RESIDENTIAL 87.48 sqm / 941.63 sqft

SPEC ID: 60dc9b9338b96a0daadecdd25

**Disclaimer:** These particulars are thought to be materially correct though their accuracy is not guaranteed and they do not form part of any contract. All measurements are approximate and we have not tested any fitted appliances, electrical or plumbing installation or central heating systems.