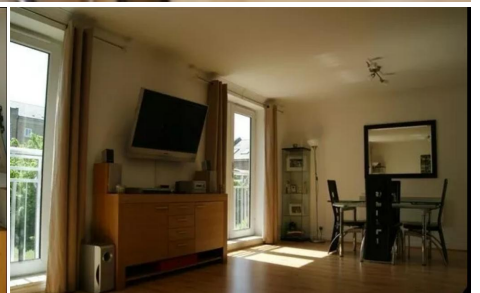
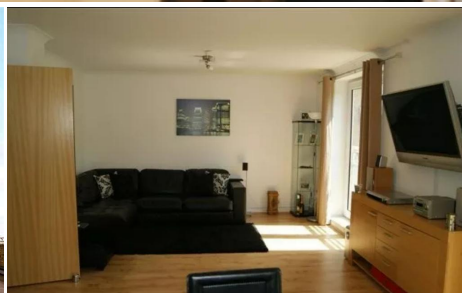




2 Bedroom Flat for Rent

Cubitt Town, Isle of Dogs, London, England, E14 3GE



Key Features

- Spacious Living Room • 2 Double Bedrooms • Two Bathrooms (1 En-Suite) • Fully Fitted Kitchen • Wooden Flooring Throughout • Ample Storage Space • Access to Private Garden • On Site Concierge • Private Parking • Excellent Transport Links

£375 per week

Description

TMV Estate Agents are proud to present this stunning and well presented 2 double bedroom, split level apartment situated in Millennium Wharf.

The apartment comprises a large lounge/reception room benefitting from wooden flooring throughout and double glass doors, allowing plenty of light.

There are two double bedrooms, both benefitting from ample storage space and a neutral decor. The kitchen is fully fitted and features modern appliances and a marble worktop. There are two bathrooms, one being an en-suite and a main family bathroom.

The property is available furnished to a high standard and has access to a private gated garden area.

Further benefits include allocated gated private parking and secure visitor parking.

