



2 Bedroom Flat for Rent

Rogers Estate, Globe Road, Bethnal Green, London, E2 0JZ



Key Features

- First Floor • 2 Rooms • Double Glazing • Fully fitted kitchen • Close to Local Amenities • Close to Bethnal Green Station • Secure Entry • Available Now

£420 per week

Description

TMV estate agents are proud to present this 2 Bedroom First floor flat in a quite residential area in Bethnal Green, E2. This property comes comprises of 2 double bedrooms, a separate lounge and a fully fitted kitchen that has been recently refurbished.

Shoreditch and Brick Lane are minutes walk away offering plenty of shops, bars and restaurants. Bethnal Green Underground Station is within 2 minute's walk offering excellent transport links. Bus routes towards the City and West End are also nearby.





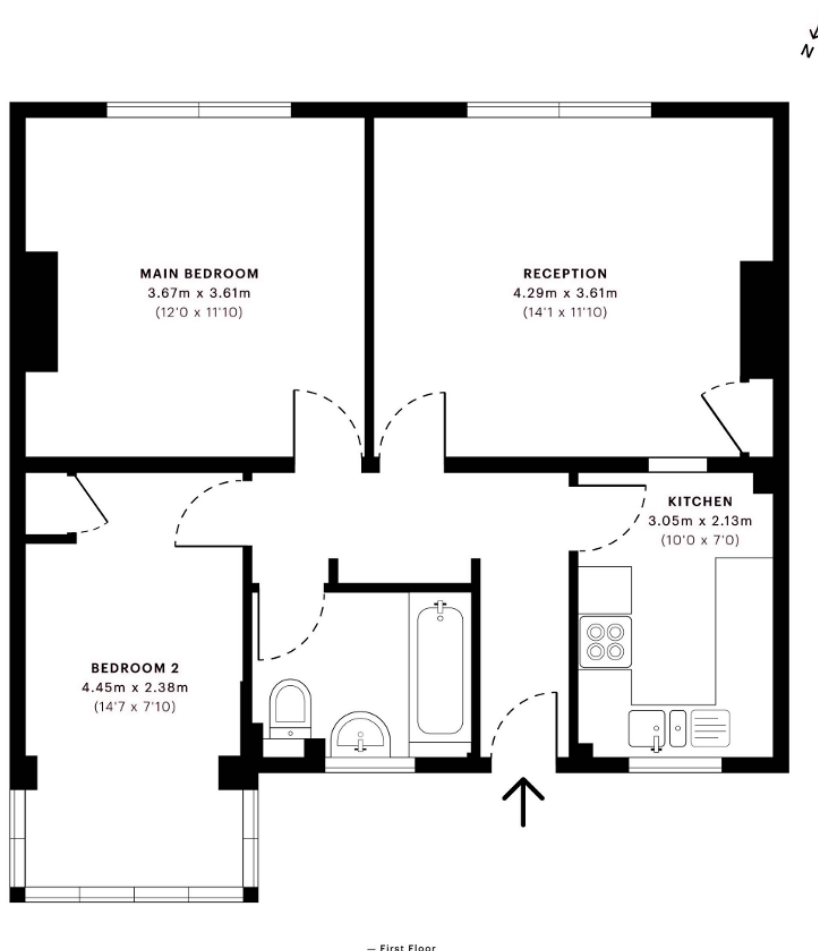


Rogers Estate, E2

CAPTURE DATE 27/01/2021 LASER SCAN POINTS 1,563,165

GROSS INTERNAL AREA

58.93 sqm / 634.32 sqft



GROSS INTERNAL AREA (GIA)
The footprint of the property
58.93 sqm / 634.32 sqft

NET INTERNAL AREA (NIA)
Excludes walls and external features
Includes vestibules, restricted head height
54.36 sqm / 585.13 sqft

EXTERNAL STRUCTURAL FEATURES
Balconies, terraces, verandas etc.
0.00 sqm / 0.00 sqft

RESTRICTED HEAD HEIGHT
Limited use area under 1.5 m
0.00 sqm / 0.00 sqft



Spec Verified floor plans are produced in accordance with Royal Institution of Chartered Surveyors' Property Measurement Standards. Plots and gardens are illustrative only and excluded from all area calculations. Due to rounding, numbers may not add up precisely. All measurements shown for the individual room lengths and widths are the maximum points of measurements captured in the scan.

IPMS 3B RESIDENTIAL 58.04 sqm / 624.74 sqft
IPMS 3C RESIDENTIAL 54.51 sqm / 586.74 sqft

SPEC ID: 60081e9fb8f2ea0dc58bcf3e

Disclaimer: These particulars are thought to be materially correct though their accuracy is not guaranteed and they do not form part of any contract. All measurements are approximate and we have not tested any fitted appliances, electrical or plumbing installation or central heating systems.