



## 3 Bedroom Apartment for Rent

Greenland Place, Pell Street, Canada Water, London, SE8 5ES



### Key Features

- 3 Bedrooms • 3 Bathrooms • Concierge Service • Close to Local Amenities • 1002 square feet • Close to Greenland Docks • Fantastic sized rooms

£560 per week

## Description

TMV are proud to present this amazing 3 bedroom 3 bathroom apartment in the contemporary Greenland Place, just moments from the historic Greenland Dock and Surrey Quays Station. Set around attractive landscaped surroundings, a range of on-site amenities are designed to offer the ultimate London lifestyle such as a 24 hour concierge and residents' fitness suite.

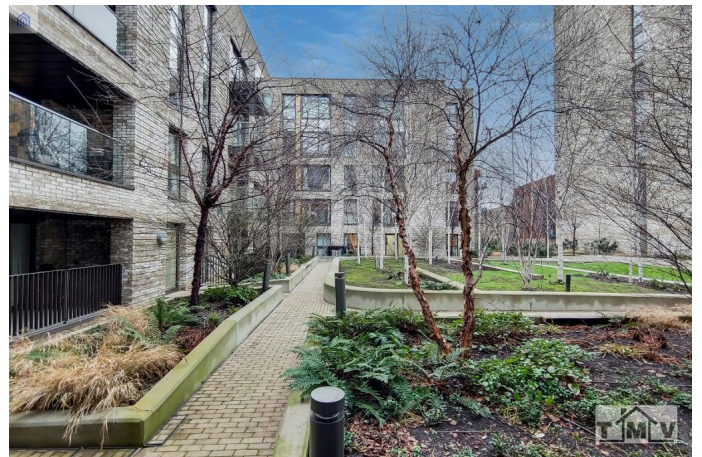
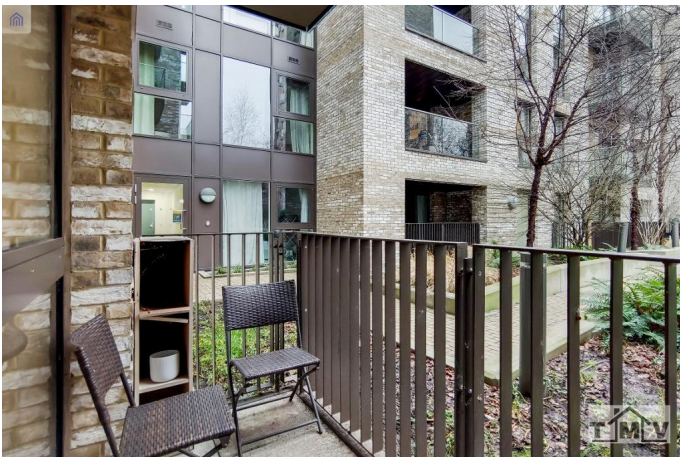
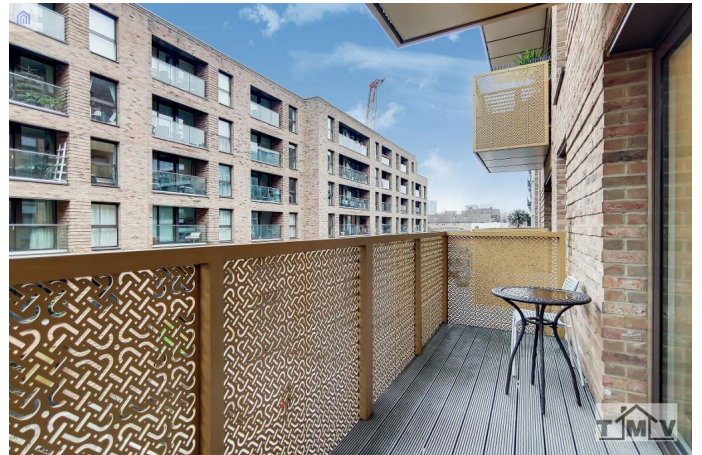
Situated on the 2nd floor, this contemporary apartment boasts 1002 sq ft with the best possible combination of living space, design and specification. Complete with 2 private balconies, there are fabulous views of the landscaped courtyard and the City skyline to enjoy from the comfort of this home. Everything in this apartment is elegantly designed for modern living, including floor-to-ceiling glazing for the maximum natural light to the fully integrated kitchen with appliances to make cooking and entertaining a pleasure.

A concierge is there to greet you and will soon operate on 24 hour basis, helping with day-to-day tasks like receiving parcels. Adding to the convenience is an on-site residents' fitness suite and around 6,500 square metres of commercial space, so there's plenty of room for a variety of businesses, shops and cafés for you to enjoy.









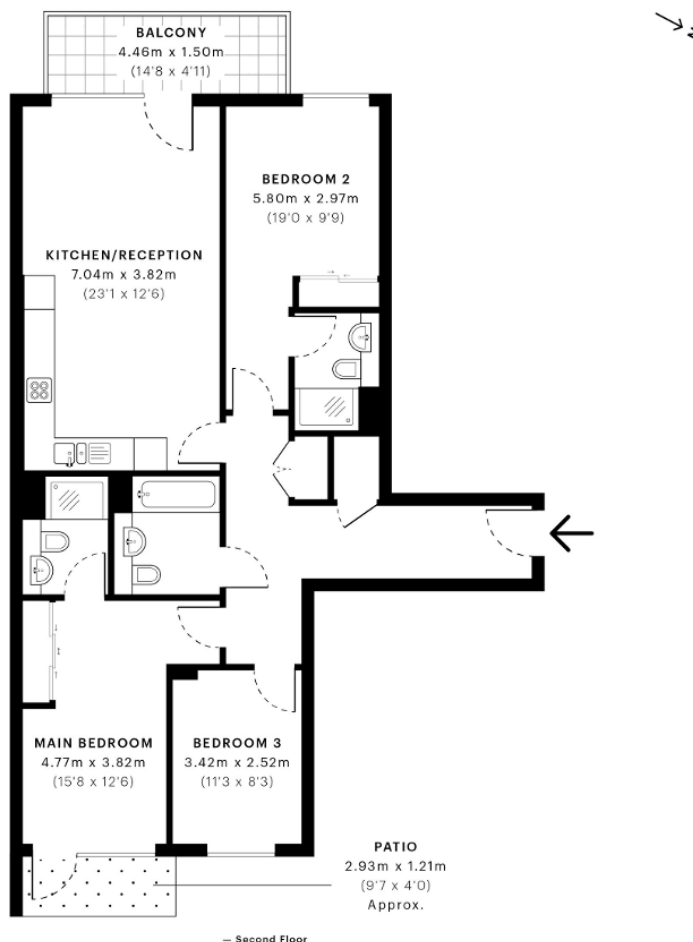


## Copenhagen Court, SE8

CAPTURE DATE 01/02/2021 LASER SCAN POINTS 36,656,778

GROSS INTERNAL AREA

93.64 sqm / 1007.93 sqft



**GROSS INTERNAL AREA (GIA)**  
The footprint of the property  
93.64 sqm / 1007.93 sqft

**NET INTERNAL AREA (NIA)**  
Excludes walls and external features  
Includes wall thickness, restricted head height  
89.30 sqm / 961.22 sqft

**EXTERNAL STRUCTURAL FEATURES**  
Balconies, terraces, verandas etc.  
6.30 sqm / 67.81 sqft

**RESTRICTED HEAD HEIGHT**  
Limited use area under 1.5 m  
0.00 sqm / 0.00 sqft



Spec Verified floor plans are produced in accordance with Royal Institution of Chartered Surveyors' Property Measurement Standards. Plots and gardens are illustrative only and excluded from all area calculations. Due to rounding, numbers may not add up precisely. All measurements shown for the individual room lengths and widths are the maximum points of measurements captured in the scan.

IPMS 3B RESIDENTIAL 95.97 sqm / 1035.30 sqft  
IPMS 3C RESIDENTIAL 95.79 sqm / 1031.07 sqft  
SPEC ID: 600ea276326c090dce49e7bd

**Disclaimer:** These particulars are thought to be materially correct though their accuracy is not guaranteed and they do not form part of any contract. All measurements are approximate and we have not tested any fitted appliances, electrical or plumbing installation or central heating systems.