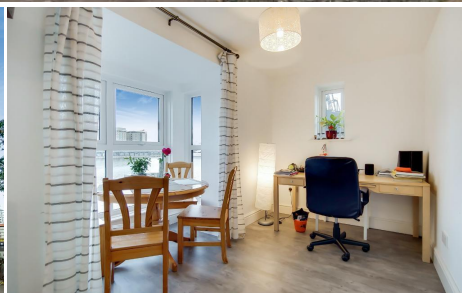
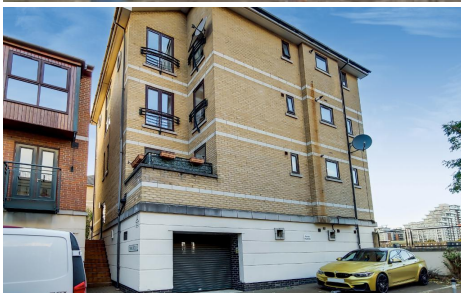




2 Bedroom Flat for Sale

De Quincy, Canning town, London, E16 1SU



Key Features

- Two Bedroom Flat
- Excellent Location
- Close to Local Amenities
- DLR Station nearby
- Large Living Room
- Modern Kitchen
- Excellent Transport Links

£385,000

Description

TMV Estate Agents present this wonderful two bedroom home in Canning Town.

The property boasts two excellent sized rooms, modern kitchen and a large living room with great views. The property is conveniently located in the Royal Docks area with excellent transport links. Galleon's Reach Shopping Centre is only a few minutes drive away offering plenty of shops, restaurants and supermarkets.

The Emirate's Air Line Cable Car is a stone's throw away allowing quick and easy access to the o2.



