



2 Bedroom Flat for Rent

Pott street, Bethnal Green, London, E2 0EG



Key Features

- Newly Refurbished
- ALL BILLS INCLUDED
- ex local
- 2 Large double Bedroom
- Security Entrance
- Close to all local Amenities
- 1 minute walk to Bethnal Green Station

£381 per week

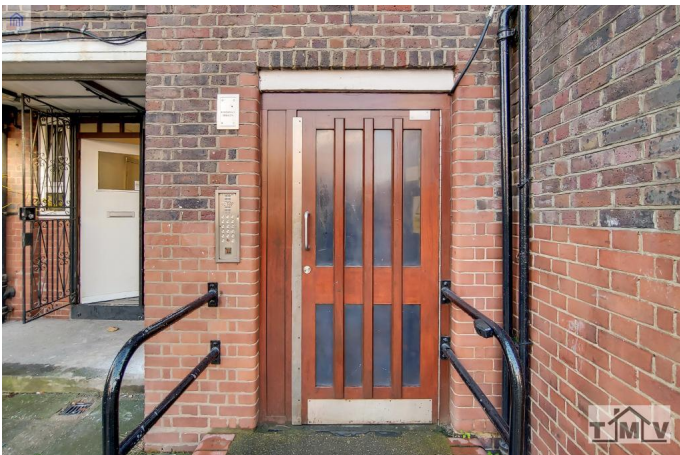
Description

TMV Estate Agents are pleased to offer this two double Bed room first floor flat located a stone's throw away from Bethnal Green Tube Station. The property benefits from two excellent sized rooms, separate fully fitted kitchen and a large living room. All BILLS are included with this property.

The property is conveniently situated in Bethnal Green, with Shoreditch and Brick Lane within walking distance offering an array of bars, restaurants and shops.

Available to view now.





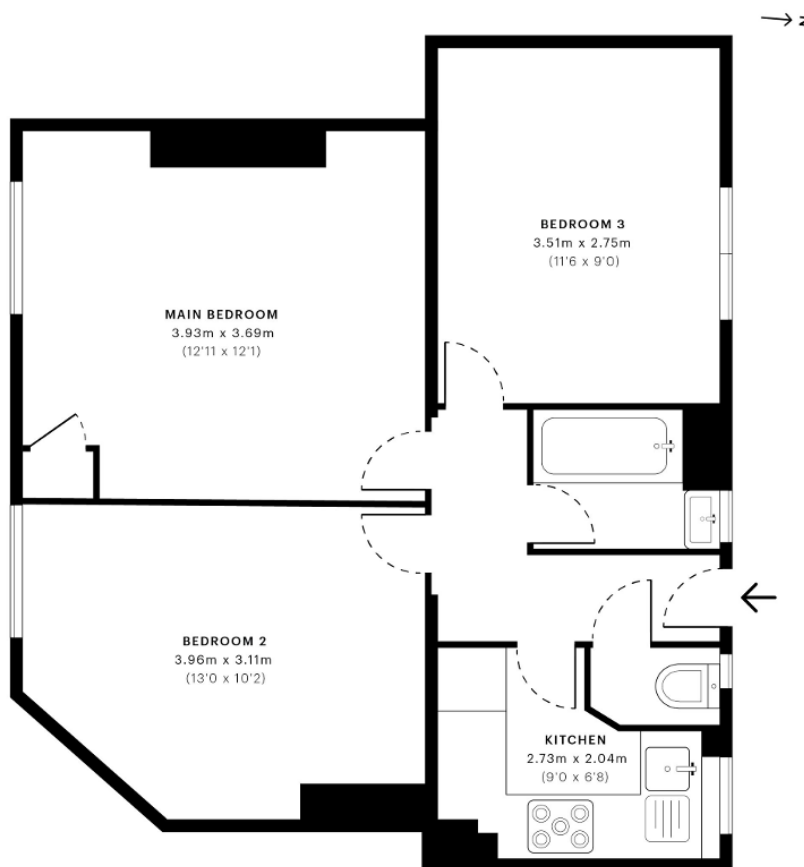


Newcourt House, E2

CAPTURE DATE 19/11/2020 LASER SCAN POINTS 1,796,944

GROSS INTERNAL AREA

49.54 sqm / 533.24 sqft



— First Floor

GROSS INTERNAL AREA (GIA)
The footprint of the property
49.54 sqm / 533.24 sqft

NET INTERNAL AREA (NIA)
Excludes walls and external features
Includes nookrooms, restricted head height
45.77 sqm / 492.66 sqft

EXTERNAL STRUCTURAL FEATURES
Balconies, terraces, verandas etc.
0.00 sqm / 0.00 sqft

RESTRICTED HEAD HEIGHT
Limited use area under 1.5 m
0.00 sqm / 0.00 sqft



Spec Verified floor plans are produced in accordance with Royal Institution of Chartered Surveyors' Property Measurement Standards. Plots and gardens are illustrative only and excluded from all area calculations. Due to rounding, numbers may not add up precisely. All measurements shown for the individual room lengths and widths are the maximum points of measurements captured in the scan.

IPMS 3B RESIDENTIAL 49.61 sqm / 534.00 sqft
IPMS 3C RESIDENTIAL 46.88 sqm / 504.61 sqft

SPEC ID: 5fb3bfb9902b0de13252c8

Disclaimer: These particulars are thought to be materially correct though their accuracy is not guaranteed and they do not form part of any contract. All measurements are approximate and we have not tested any fitted appliances, electrical or plumbing installation or central heating systems.